



# AUCTION

LEADING THE INDUSTRY SINCE 1945

Realtors • Auctioneers • Advisors

**SATURDAY – OCTOBER 1, 2022 – 10:30 AM  
REAL ESTATE SELLS FIRST**

## Persinger Auction

**AUCTION #1 – 72-ACRE FARM WITH BANK BARN – 30 X 60  
MACHINERY SHED – HIGH-TENSILE FENCE**

**OPEN & WOODED LAND – 4291 S. PRICETOWN RD.**

**AUCTION #2 – 18.3 ACRES WITH BARN – HIGH-TENSILE FENCE**

**FREE GAS AVAILABLE – 8094 S. PRICETOWN RD.**

**BOTH PROPERTIES LOCATED IN BERLIN TWP. – MAHONING CO.**

**WESTERN RESERVE SCHOOLS – MINERALS TRANSFER**

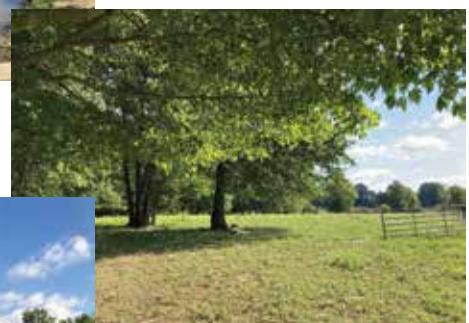
**ONLINE BIDDING AVAILABLE FOR REAL ESTATE**

Also Selling: Tractors – Farm Machinery – Excavator –  
375 Round Bales Of This Year's 1st Cutting Hay

Absolute auction, owner relocating out of state, all sells to the highest bidder from Auction #1 location:

**4291 S. PRICETOWN RD., BERLIN CENTER, OH 44401**

Directions: Take St. Rt. 534 south of I-76 or north of US Rt. 224 to location. Watch for KIKO signs.



Information is believed to be accurate but not guaranteed. KIKO Auctioneers

**800-533-5456 | kikoauctions.com**





## AUCTION #2



## AUCTION #2



## AUCTION #2



**Real Estate:** Auction #1 located at 4291 S. Pricetown Rd. – 72 acres with bank barn, 30 X 60 4-bay machinery shed, tillable land, pasture, and woods with 2 creeks, high-tensile and barbed wire fence. Beautiful land divided as follows:

**Parcel #1** – 21.5 acres with bank barn and 30 X 60 machinery shed. Mostly open land with pasture and small creek.

**Parcel #2** – 17.6 acres, mostly open with small creek.

**Parcel #3** – 13.4 acres, open and wooded land with creek

**Parcel #4** – 19.5 acres, 2/3 wooded balance open.

**Auction #2** – 18.8 acres total. Located at 8094 S. Pricetown Rd. (St. Rt. 534).

**Directions:** Take St. Rt. 534 south of Auction #1 to location. Abandoned brick home, concrete block Quonset barn with good metal roof and lean-to addition. Good high-tensile fence around the entire property. Frontage on SR 534 and Leffingwell Rd. Divided as follows:

**Parcel #1** – 10.5 acres with abandoned home. Quonset barn. Frontage on 2 roads with free gas.

**Parcel #2** – 8.3 acres mostly open land.

**TERMS ON REAL ESTATE:** 10% down auction day, balance due at closing. A 10% buyer's premium will be added to the highest bid to establish the purchase price. Any desired inspections must be made prior to bidding. All information contained herein was derived from sources believed to be correct. Information is believed to be accurate but not guaranteed. Property to be offered as a Multi Par auction and sold whichever way it brings the most.

**Tractors – Excavators:** One-owner NH TL90 full cab H/A MFWD with Groundmover LU126 loader with mat. bucket 2158 hrs with shuttle – NH TC29D MFWD hydro w/ 60" deck 3 pt. 1200 hrs – NH TC30D hyd. super steer MFWD 72" deck 3133 hrs – nice Kubota KH-191L excavator steel tracks backfill blade cab 812 act hrs 24" & 36" dirt buckets  
**Hay Equipment – Bale Feeder – Brush Hog:** One-owner NH H7320 9' discbine with flail – one-owner NH Procart 819 8-wheel rake with kicker hyd. fold – one-owner Sitrex RT-5200-H 4-star hyd. fold tedder – EZ-Trail 8 bale wagon/feed wagon with headlock sides, good rubber – heavy-duty lg. bale feeder – Apace creep feeder As Is - Cimarron 15' batwing mower 540 PTO

**Tillage & Farm Equipment – JD Backhoe Attachment – Spreaders – Feed Bins:** QT Lowe hyd. 6' trencher mod. 21C – good S/M vert. tillage tool on 272 White disc frame approx. 24' with Remlinger rolling baskets – Krause 2141 18' bi-fold disc – Phillips rotary harrow 3003A approx. 30' – Int. 5100 18-hole grain drill with press wheels – good Int. 14' dual transport cultimulcher – Dunham 10' cultimulcher – 10' transport disc. – 12' field cultivator – Great Plains solid state 15' drill with no-till hitch – Oliver & Ford 3 pt. 3-bottom plows – JD backhoe attachment off JD 450 dozer – Int. front-end loader with bucket – 8" X 12' hyd. auger – homemade QT hyd. angle blade – H & S mod. 2600 tandem spreader rear discharge – Meyer V-Max 2636 rear discharge spreader – 12-shank chisel – Brock 2-ton self-standing feed bin – 2-ton Polyfarm feed bin – plastic pipe and 20" culvert.

**Hay:** 375 1st cutting this year 4X5 net wrap round bales, approx. 150, stored inside

**Note: Open house Friday, Sept. 30, 1:00-4:00 PM.**

**TERMS ON CHATTELS:** Driver's license or State ID required to register for bidder number. Cash, Check, Debit Card, Visa, or Master Card accepted. 4% buyer's premium on all sales; 4% waived for cash or check when paid sale day. Information is believed to be accurate but not guaranteed. Multi Par auction process may be used.

**Auction By Order Of:** Richard G. Persinger



Auctioneer/Realtor®  
**RANDALL L. KIKO**  
330-831-0174  
randall@kikocompany.com



**800-533-5456 | kikoauctions.com**

